

EN

 zintek®



**THE
COLOR
LINE**





Zintek S.r.l — part of the Cordifin Group, a holding company active in the industrial, real estate, and financial sectors — produces and sells rolled titanium-zinc zintek® for use on building envelopes. Zintek covers every stage in the product's life at its plant in Venice Porto Marghera, with a dual supply chain that incorporates both the industrial process and the commercial and architectural side: from casting and rolling the zinc through to producing and selling the product and its application on roofs and façades and in other sheet metal work.

The company's mission is to create beautiful and long-lasting buildings that blend perfectly into their surroundings in any context: new builds, conservation and restoration projects, and the redevelopment of properties that have fallen into disuse.

Zintek achieves this by providing its partners and clients with organizational excellence and a top-quality product, resulting from close synergy between the technical, commercial, and educational strands of the business.



ZINTEK®: THE WORLD SEEN IN COLOUR

Zintek has always kept a close eye on the latest design trends. In its range of coloured metals, the hue and material combine to produce a true architectural feature.

The products in the «The Color Line» series enhance titanium-zinc zintek®'s natural appearance without affecting its properties. There are nine variants available: Mediterranean Blue, Lagoon Green,

Sardinian Myrtle Green, Antique Red, Natural Earth Brown, Graphite Black, Smoke Grey, Moonstone Grey, and Rock Grey.

Choosing zintek® offers the visible and tangible pleasure of a living material that maintains its value throughout its long life.

MATERIAL ARCHITECTURE: QUALITY THAT MAKES A DIFFERENCE

INNOVATION

A range of coloured rolled metals with a vast array of potential applications.

TECHNOLOGY

Different hues, same technical and functional characteristics.

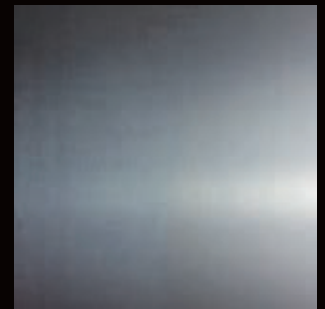
VERSATILITY

Top-quality rolled metals that imbue each project with character and originality.

THE COLOR LINE

A project for your future

A FUTURE FOR YOUR PROJECTS



ZINTEK®
NATURAL



MEDITERRANEAN
BLUE



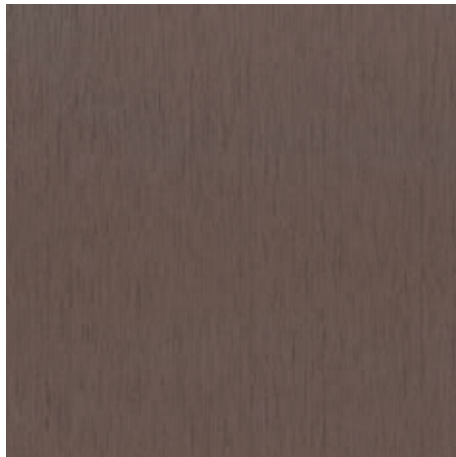
LAGOON
GREEN



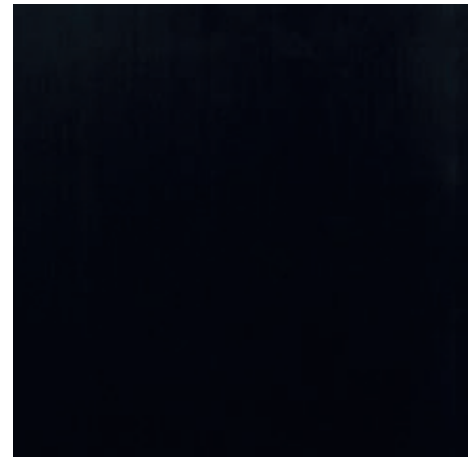
SARDINIAN MYRTLE
GREEN



ANTIQU
RED



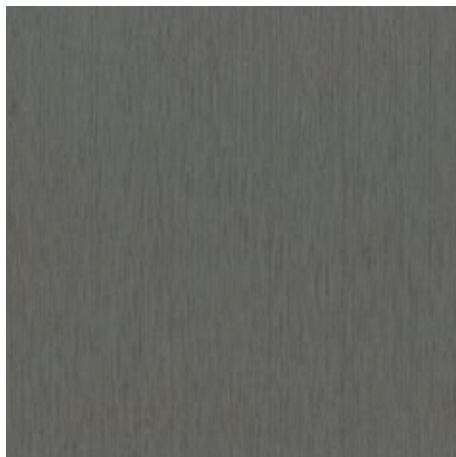
NATURAL EARTH
BROWN



GRAPHITE
BLACK



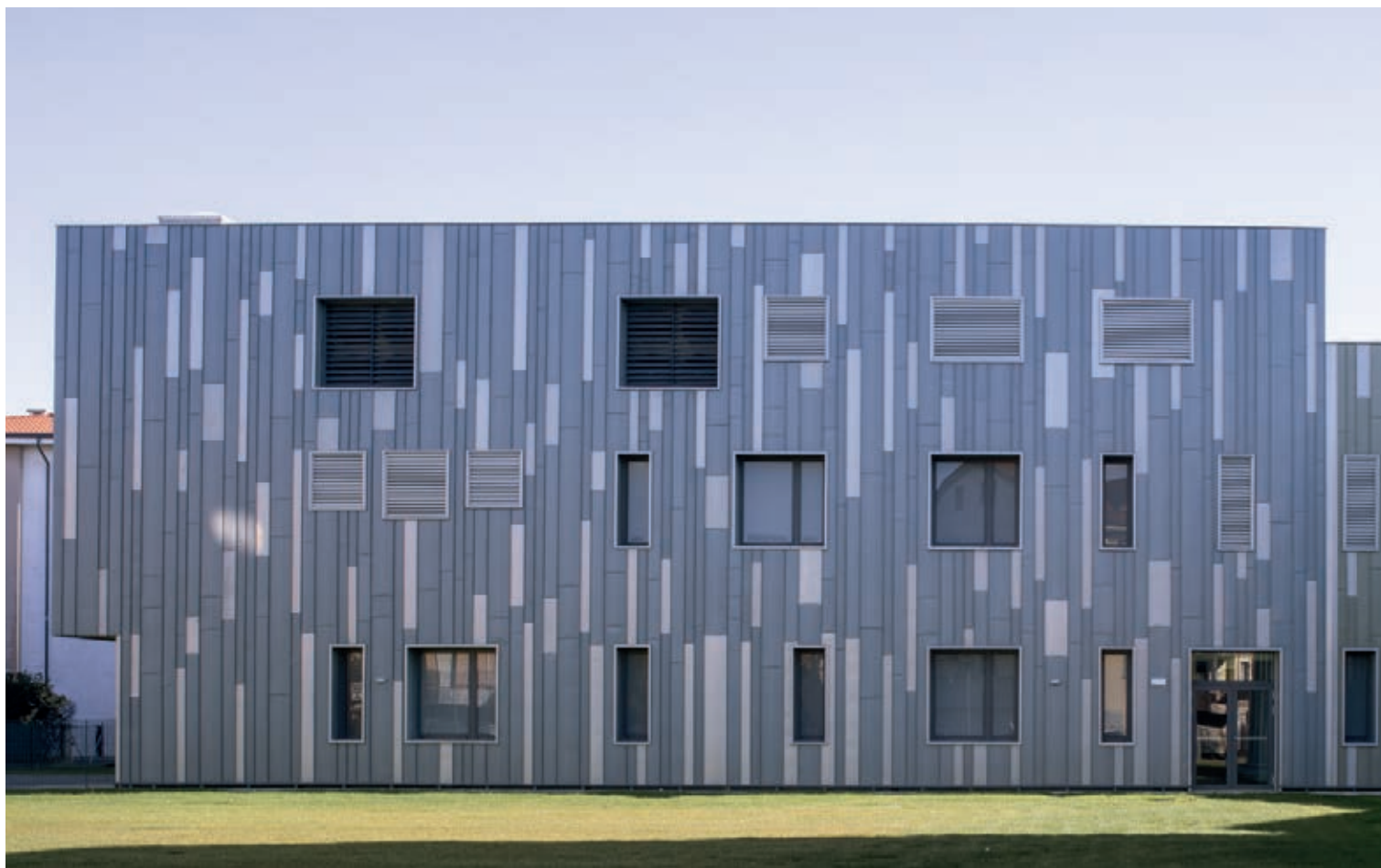
ROCK
GREY



SMOKE
GREY



MOONSTONE
GREY



MEDITERRANEAN BLUE

The beguiling charm of the underwater world, reproduced in a soft colour with striking veins worthy of Neptune himself.



LAGOON GREEN

A tribute to the beauty of Venice and the iridescent colour of the water that flows past its bridges and palaces.



SARDINIAN MYRTLE GREEN

A deep green with bold veins that evokes the shades and aromas of Mediterranean scrubland on a warm summer night.



ANTIQUE RED

A red that has always epitomized the concept of “home”, from protective walls to the roof over your head. The same colour as ever, but with revolutionary performance.



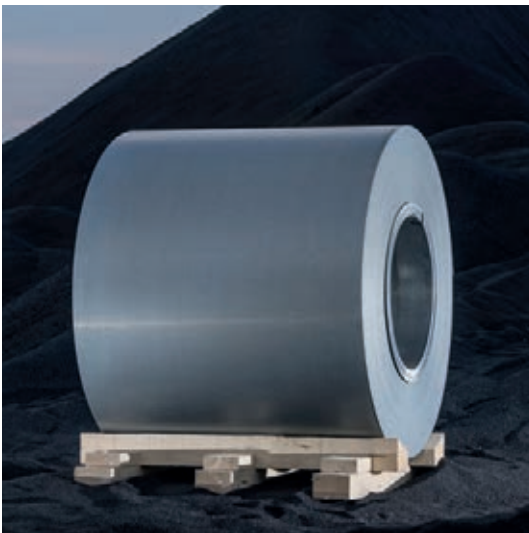
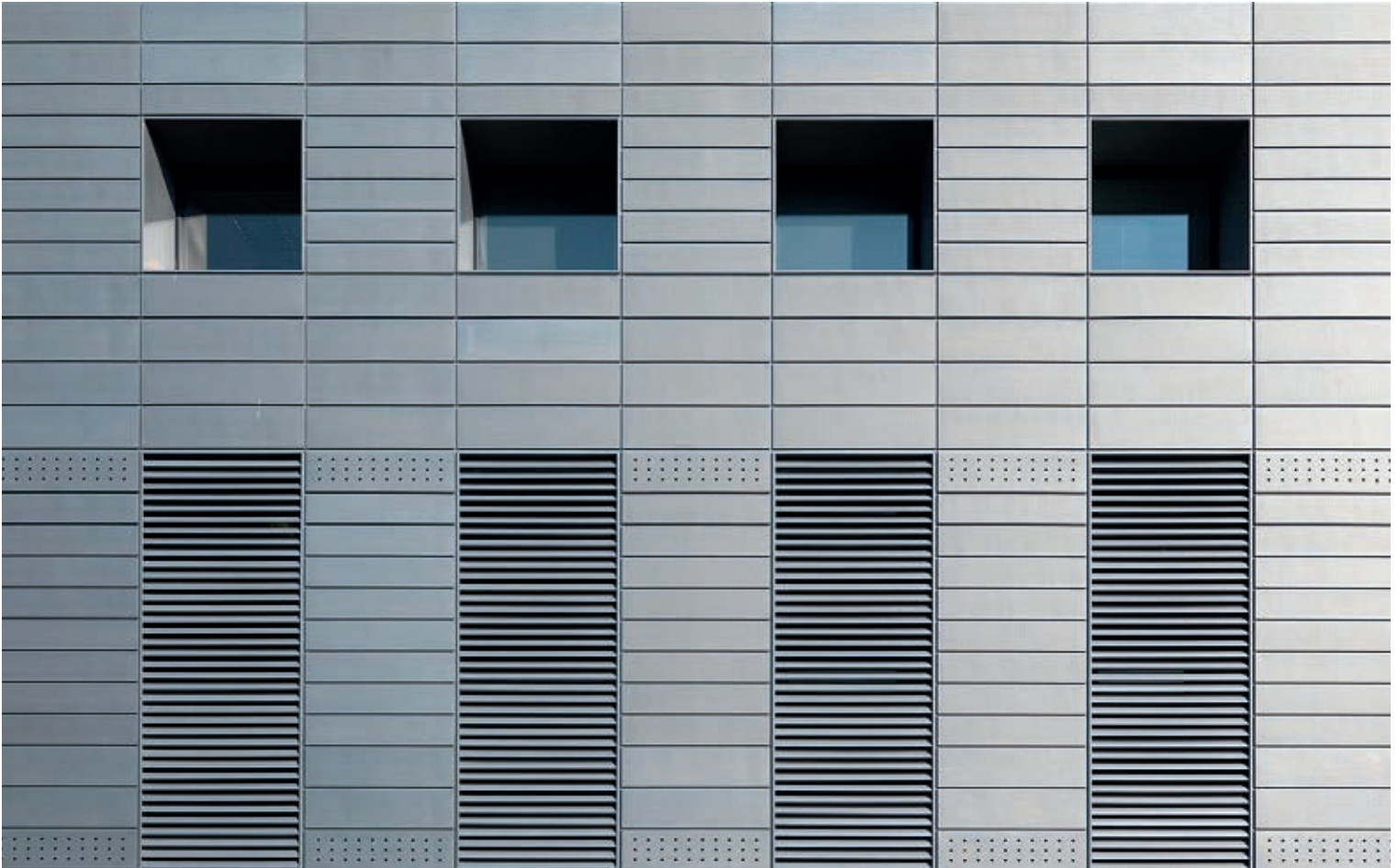
NATURAL EARTH BROWN

A homage to the colour of earth, the soil that supports forests and cities.
A timely reminder of our shared responsibility for the planet's wellbeing.



GRAPHITE BLACK

Graphite is a mineral that — quite literally — always leaves its mark. Every project's journey from idea to reality begins with a single pencil stroke.



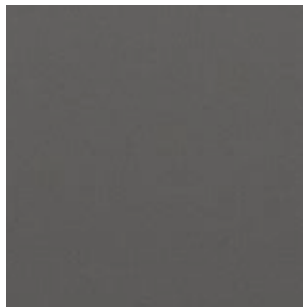
ROCK GREY

The original zintek® colour: a strong and elegant grey that clads every city's most important buildings and, like rock, stands the test of time.



SMOKE GREY

The colour of an autumn evening in the city, with dark veins suggesting a recent rain shower. A cloak that wraps up your soul and invites you to rest both body and mind.



MOONSTONE GREY

A sensory journey to the other side of the moon: a velvety grey that reflects the air of mystery surrounding our satellite's hidden face.

A PROJECT FOR YOUR FUTURE

Future for your projects

**THE
COLOR
LINE**

APPLICATIONS OF ZINTEK®

Zintek is a leading player in the building envelope sector. It can install any solution involving the use of titanium-zinc zintek® on roofs or façades or in other sheet metal work, as well as selling an exclusive range of products on the global market.



ROOFS

Titanium-zinc zintek® can be adapted to any design, giving architects unlimited creative freedom.



FAÇADES

Stylish and modern cladding that affords guaranteed protection.



SHEET METAL WORK

Titanium-zinc accessories for projects that are perfect down to the smallest detail.

FIELDS OF APPLICATION

Metal cladding is increasingly popular among architects all around the world, who are constantly on the lookout for durable, versatile and sustainable materials that fit harmoniously into both urban settings and natural landscapes.



CONTEMPORARY ARCHITECTURE

The ideal material to turn the ideas of today's architects into reality.



CONSERVATION RESTORATION

The perfect choice for preserving the value of historic buildings and monuments.



REDEVELOPMENT

An essential tool for giving abandoned buildings a new lease of life.

TECHNICAL FILE OF ZINTEK® TITANIUM ZINC PRODUCTS

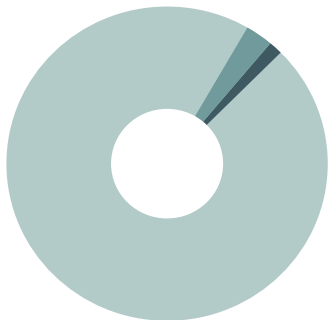
UNI EN 988 - COMPOSITION IN %			UNI EN 988 - MECHANICAL CHARACTERISTICS				MASS CALCULATIONS	
	MIN	MAX					NOMINAL THICKNESS mm	APPROXIMATE MASS Kg/m ²
Cu	0.080	1.000	Offset from proportionality unit load	0.20%	Rp 0.2	N/mm ²	min 100	
Ti	0.060	0.200	Tensile strength		Rm	N/mm ²	min 150	0.60
Al	—	0.015	Elongation percentage after break		A50mm	%	min 35	0.65
Zn	—	—	Sliding elongation percentage			%	max 0.1	0.70
								5.00
								0.80
	Z1-quality zinc		Minimum hardness				HV 45	1.00
								7.0

PHYSICAL AND TECHNOLOGICAL CHARACTERISTICS

Description	MEASUREMENT UNIT	Value
Density	Kg/dm ³	7.14
Melting point	°C	419
Specific heat at 20° C	KJ/Kg °C	0.401
Thermal conductivity at 20° C	W/m °K	109
Electrical conductivity at 20° C	m/ohm mm ²	17
Thermal expansion coefficient in parallel direction to the lamination	mm/m °C	0.022
Thermal expansion coefficient in transversal direction to the lamination	mm/m °C	0.017
Re-crystalization limit	°C	>300
Elasticity modulus	N/mm ²	>80,000
Erichsen value	mm	07-09
Bend test at 180° 20° C in longitudinal direction	n°	3 minimum
Bend test at 180° 20° C in transversal direction	n°	5 minimum
Rigidity	%	40-55
Non magnetic		
Non combustible		



ZINTEK®: AN ITALIAN PRODUCT



ZINC **ZN**

COPPER **CU**

TITANIUM **TI**

Zintek® is an alloy composed of zinc, copper, and titanium, produced with high-quality 99.995% zinc, in full observance of European standard EN 1179, with the addition of alloying elements. The zintek® rolled products comply with European standard EN 988 “Zinc and Zinc alloys – Specifications for flat rolled products and for construction works.” The alloy components which improve the characteristics of zinc in the rolled products are titanium, which increases resistance to permanent deformation, and copper, which increases tensile strength. The combination of these two components reduces the alloy’s expansion coefficient.

COMPANY

Zintek Srl, a Cordifin Group company, the sole Italian manufacturer of zintek® titanium zinc rolled products.

PLANT

Operational since 1936 in the Venetian industrial area, our plant covers an area of 86,000 sq. m., 48,000 of which are indoors.



SALES AREA

Includes a direct sales channel for zintek® rolled products and accessories, offering cost estimate and post-sales support.



MARKETING AREA

Studies the best tools to increase the visibility of the product and company, through publications and attendance in fairs and events.



TECHNICAL AREA

Offers design-focused and technical consultancy, provides cost estimates and budgets, supplies informational material and manages the P.O.L., online estimate cost calculator service.



EDUCATION

The Zintek Academy, which opened in 2022, replacing the Tinsmithery School, offers courses for sheet metal workers and installers and seminars and webinars for professionals in the sector and architects.



GENERAL CONTRACTOR

In the case of major works, Zintek coordinates specialized companies to provide the full roofing package.

OPENING TO FOREIGN MARKETS



PROMOTING SUSTAINABLE ARCHITECTURE

Zintek products comply with all relevant environmental requirements, including the sustainable use of resources, product and life cycle assessments, and CE branding.

Zintek has certified its health and safety, environmental management, and ethics processes to prove to its employees, partners, and clients that it is 100% reliable.



ZINTEK: AT YOUR SERVICE

SAMPLES

«The Color Line»
sample pack

MATERIALS

Technical information
about the product

CONSULTANCY

Our experience applied
to your projects

SUPPORT

Construction site, technical
and installation support

EDUCATION

Our course
programme

EVENTS

Our seminar
calendar





Zintek S.r.l.

Via delle Industrie, 22
30175 – Venice Porto Marghera – ITALY
Tel. 041 2901866
zintek@zintek.it
www.zintek.it





ZINTEK® PRODUCTION PLANT - 86.000 SQ. M.

EN

 zintek®

Zintek Srl – Via delle Industrie, 22
Venice Porto Marghera – ITALY
Tel. +39 041 290 18 66
zintek@zintek.it

WWW.ZINTEK.IT